

← **INSIDE FRONT** →

← **INSIDE BACK** →

← **INFOLD** →

← **INFOLD** →

**BLEED**

Any background images or colors, including borders, should extend to this line.

**TRIM**

This is where the brochures will be cut.

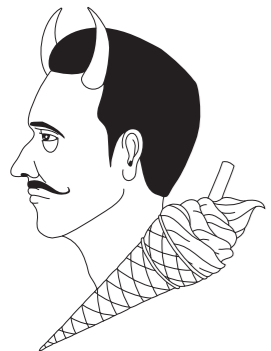
**SAFETY**

Anything important that shouldn't be cut off must be within the safety line. If there are borders, they should extend from the bleed to the safety line, or beyond it.

← **FOLD** →

← **FOLD** →

← **FOLD** →



**12x18 BROCHURE**

MORE AT [WWW.FIREBALLPRINTING.COM](http://WWW.FIREBALLPRINTING.COM)